



JOB FACT SHEET

Facility:
Sheraton Midtown Boiler Plant

Location:
New York, New York

Project Type:
Off Site Construction – Penthouse

Duration:
Five Months

PROJECT OVERVIEW

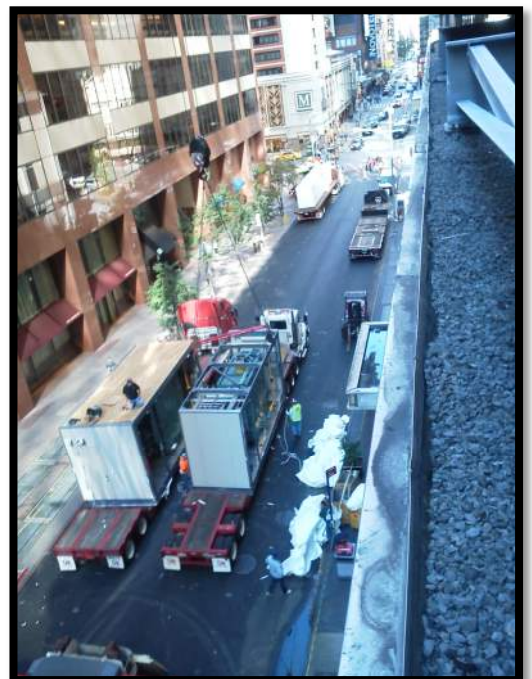
Off Site Constructed Boiler Plant for Hotel in Mid-town Manhattan allowing the hotel to generate their own steam.

PROJECT HIGHLIGHTS

1100 Sq. Ft. Boiler Plant
(4) 191 HP; 8,000 MBH Input hot water gas fired steam boilers
Piping systems steam
Condensate and make up water
Midtown Manhattan - located on the 5th floor
Two tier system - equipment on first level and piping and electrical top hat section

TECHNICAL DETAILS

- Rigging and setting of (8) sections took (1) ten hour day
- Crane and road closure for only that time frame
- All weather insulated panels with two hour fire rating
- Architectural doors etc
- Carlise roofing installed by Baker Roofing
- Shebler Chimney Systems boiler stacks
- Markel Unit Heaters
- Envirotrol Controls





JOB FACT SHEET

JOB PHOTOS

