



## JOB FACT SHEET

Facility:  
**C.F. Martin & Co. (Martin Guitar)**

Location:  
**Nazareth, Pennsylvania**

Project Type:  
**Off Site Construction – CUP/AHUs/Pipe Racks**

Project Duration:  
**(12) Twelve Months**

### PROJECT OVERVIEW

EAS worked with our representative Accuspec, Inc. to design and build a central utility plant and AHUs to replace outdated rooftop DX AHUs. During the design process it was determined based on cost and speed, EAS could provide pipe rack connecting the CUP to the AHUs as an OSC solution to complete the project faster, reducing onsite labor and providing better coordination, higher quality and eliminating down time at Martin's Guitar's primary manufacturing facility. EAS used a phased approach. Design and manufacture chiller plant and install to pre-function ready. Set pipe rack. Design and manufacture AHUs. The old DX units were replaced several per week-end at a time, without disrupting ongoing manufacturing.

### PROJECT HIGHLIGHTS

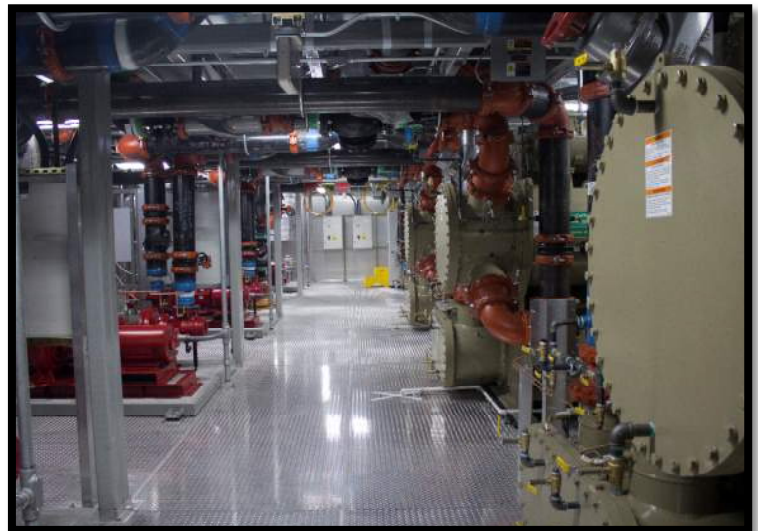
- Turnkey Project Solution
- EAS rigged, set, reconnected CUP, erected cooling tower platform, set all AHUs, and pipe racks.
- AHUs were designed to fit existing DX RTU curbs, eliminating the need for additional roof repairs.
- Units set over multiple weekends to not disrupt Martin's manufacturing schedule.
- Pipe racks designed to be supported from existing building steel, reducing the amount of structural design, coordination and additional steel to complete the project.

### CUP TECHNICAL DETAILS

- (3) 500 Ton Chillers
- (3) 1500 GPM Cooling Towers
- (3) 5000 mbh Condensing Boilers
- (3) Base mounted centrifugal pumps per CHWP, CWP and (2) SHWP
- (1) In-Line mounted centrifugal pump WEP and (3) PHWP
- Heat Exchanger
- Water Filtration
- Boiler stacks
- Chemical Treatment
- Single point power supply. All internal electrical
- Controls provided by others, installed by EAS.
- (8) Cup sections

### AHU and PIPE RACK TECHNICAL DETAILS

- (18) single section AHUs
- 257,990 combined CFM - ranging from 7,500 to 35,000
- Matching existing curbs
- Complete with supply fans, coils, Heat Pipe, Gas Furnace, Dampers, Filters
- 900 Linear feet of Pipe racks (30) sections
- CHW, HHW, gas fired heat pipe, humidification





## JOB FACT SHEET

### JOB PHOTOS





## JOB FACT SHEET

### JOB PHOTOS

